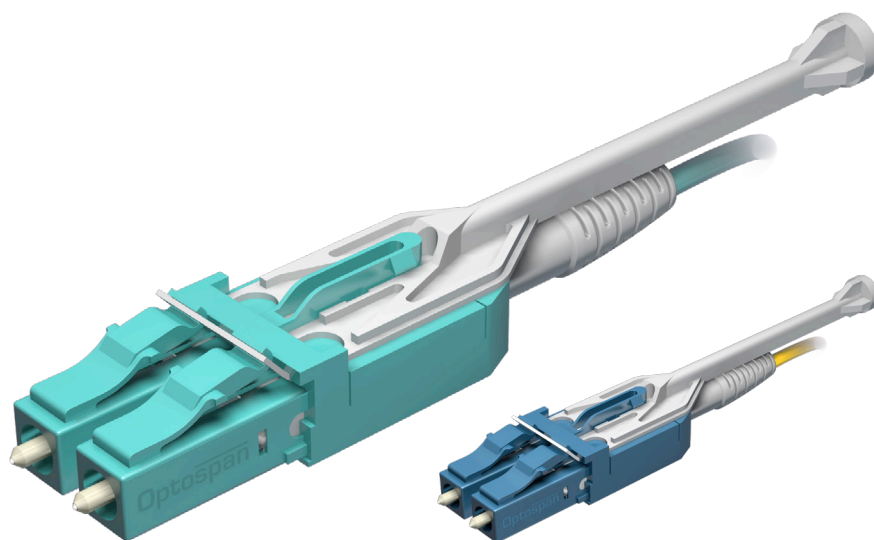


## ULTRAHD EZ-TAB FIBER CABLES

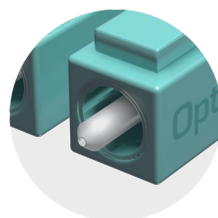
**PUSH/PULL LC CONNECTORS**  
**ULTRA LOW LOSS**



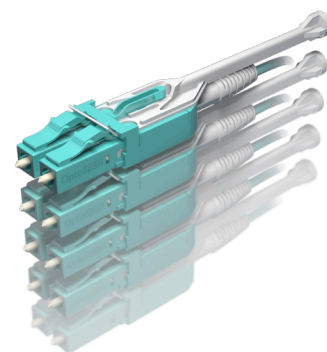
Equipped with a unique trigger mechanism, OptoSpan ULTRAHD EZ-TAB Low Loss patch cables empower network technicians to effortlessly install and de-install LC cables in high-density panels and other tight spaces in data centers.

The key to maximum accessibility is a unique latching connector that utilizes a rigid "push-pull tab", which makes it easier to engage and disengage LC connectors.

Exclusively by OptoSpan, The ULTRAHD EZ-TAB cables feature a higher performance proprietary Ultra Low-loss LC ferrule which reduces the insertion loss (IL) to less than .09dB (ordinary IL is .30dB) enabling higher bandwidth and longer span applications.



**Ultra Low Loss** <.09dB  
Outstanding Network Performance



Engage/disengaged easily from densely loaded panels

### TECHNICAL SPECIFICATIONS

#### ULTRAHD EZ-TAB LC CONNECTOR

	IL AGAINST MASTER (DB)		IL RANDOM MATING (DB)	
	Average IL	Maximum IL	Average IL	Maximum IL
Solid Body Low Loss SM	0.05	0.15	0.07	0.15
Solid Body Low Loss APC SM	0.07	0.15	0.09	0.20
Solid Body Low Loss MM	0.05	0.15	0.07	0.15
Operating Temperature	-40°C to +75°C			
Durability	<0.2dB typical change, 500 matings			

#### CLEARCURVE® OM4 FIBER

Attenuation		Macrobend Loss			
Wavelength (nm)	Maximum Value (dB/km)	Mandrel Radius (nm)	Number of turns	Induced Attenuation (db)	
				850 nm	1300 nm
850	≤ 2.3	37.5	100	≤ 0.05	≤ 0.15
1300	≤ 0.6	15	2	≤ 0.1	≤ 0.3

#### CORNING SMF-28E+ OS2 FIBER

Maximum Attenuation		Macrobend Loss			
Wavelength (nm)	Maximum Value* (dB/km)	Mandrel Diameter (mm)	Number of Turns	Wavelength (nm)	Induced Attenuation * (dB)
1310	0.33-0.35	50	100	1310	≤ 0.05
1550	0.19-0.20	50	100	1550	≤ 0.05
<b>Outer Diameter</b>	3.0mm ±0.2mm				

Note: The ULTRAHD EZ-Tab cables exceeds Verizon FOC TPR 9409 and IEC61300-3-34 Grade A random mating requirements.