

### 6U Fiber Enclosure

#### 288 Port - Rack Mount Splice & Termination Panel Ultimate Serviceability and Manageability

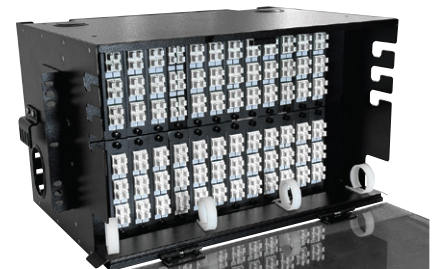
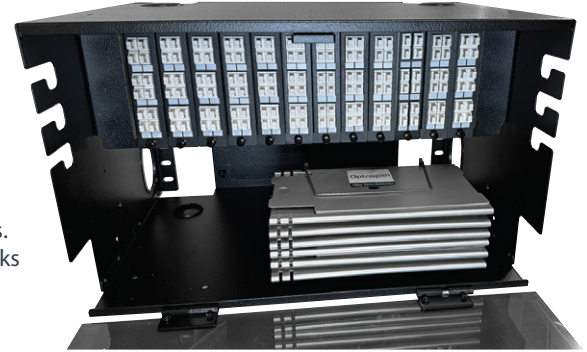
OptoSpan's Select RM-288 Rack Mount Termination and Splicing Enclosures provide a convenient, secure and organized housing for fiber optic connections and terminations, as well as a central point for splicing fiber optic cables for data center and telecom applications.

The RM-288 Rack mount fiber enclosures are frequently employed in a diverse range of applications, including data centers, telecommunication rooms and enterprise networks. These Rack mount fiber termination enclosures are crucial to keeping fiber optic networks running smoothly and efficiently because of the roles they play in organizing and safeguarding fiber optic connections.

This RM-288 patch panel has two sections for fiber optic cable entry and exit. It can be pre-configured with up to 24 MTP-LC cassettes, up to 288 pass-through LC, SC, ST, or FC ports, and up to 144 fiber splicing capacity.

This rack-mounted patch panel includes cable management accessories, including cable ties, cable clips, and a grid label sticker, to support and organize cables, thereby reducing the risk of damage or tangling.

Splice trays, pigtails, and multi-fiber (MTP/MPO) cables are available as optional accessories and can be pre-configured for use with this panel.



#### Key Features and Benefits:

<b>Compact Design</b>	6 rack-unit 10.5" high (6U)
<b>Splice and Termination Enclosure</b>	Flexibility of cable termination or splicing in a single panel
<b>Modular Design for up to 24 Cassettes, Adapter Panels or Splice Trays</b>	Offers a compact, flexible, and modular solution for a variety of pre-terminated cables
<b>Compatible with full line of OptoSpan HD Series Cassettes and Adapter Panels</b>	Choose from the OptoSpan HD Series modules, such as (24) MTP-LC cassettes, (24) 12F/24F pass-through LC, SC, ST, or FC adapter panels, or (6) Splice Trays
<b>Compatible with OptoSpan Armored and Non-Armored Cables</b>	Simple to integrate this panel with SteelFlex and SteelPatch Armored and Non-Armored cables, enabling reliable networks
<b>Flexible Rack Mounting</b>	Includes reversible brackets for mounting in both 19" and 23" racks.
<b>16 Gauge CRS (Steel) Body with Black Powder Coat</b>	For durable, dependable, and robust fiber optic network
<b>20 Gauge Aluminum Splice Trays</b>	Rugged splice chip that is pre-installed and ready for fusion, mechanical, or ribbon splicing
<b>Mounting Options</b>	19" sliding mounting brackets flush mount to 5" projection



<b>Easy Access to Cables/Adapters</b>	Front and rear access
<b>Spacious Interior Sections</b>	Facilitates field access and installation
<b>Secure Cable Management</b>	Allows for the connection of cables from the front, rear, top, or bottom. The front door and back cover can be easily detached.
<b>Included Cable Management Accessories-</b>	Improve the identification and upkeep of cables and connectors
<b>Turn-key Pre Installed Option</b>	To save time in the field, panels can be delivered pre-installed with MTP-LC cassettes, adapter panels, pigtails, or cable glands
<b>Made in USA</b>	Made in the USA from the highest quality components to assure years of dependable use

<b>Dimensions:</b>	10.5"H x 17"W x 12"D (19lbs)
--------------------	------------------------------

<b>Maximum Capacity:</b>	
MTP-LC Cassettes:	Qty. 24 (12F/24F) High Density MTP-LC Cassettes
Termination (Pass-through):	Qty. 24 (12F/24F) High Density Series Adapter Panels. MPO, LC SC, ST, FC pass through options available
Splicing:	Qty. 6 (12F/24F) 10" Splice Trays

<b>OptoSpan RM Series Panel Specifications and Max Capacity</b>						<b>Pre-Terminated Fiber Cable Compatibility with RM Series Panels</b>			
Model	# Slots	Max. Fibers	# HD Series Cassettes	# HD Series Adapter Panels	# Splice Trays	SteelFlex Armored	SteelPatch Armored	MTP/MPO 12F - 144F	Breakout LC/SC/ST/FC
	Incl.	Incl.	Opt.	Opt.	Opt.	Opt.	Opt.	Opt.	Opt.
RM-36	3	72	3	3	3/12F	✓	✓	✓	✓
RM-72	6	144	6	6	4/24F	✓	✓	✓	✓
RM-144	12	288	12	12	6/24F	✓	✓	✓	✓
RM-288	24	576	24	24	6/24F	✓	✓	✓	✓

<b>Compatible OptoSpan Cables and Accessories</b>				
Armored Fiber Optic Cables	MTP/MPO Trunks & Harnesses	12F – 144F Breakout Cables	High Density Series MTP-LC Cassettes	High Density Series MPO, LC, SC, ST, FC Adapter Panels
